

DID YOU KNOW?

1 in 7 people live with some type of disability

•

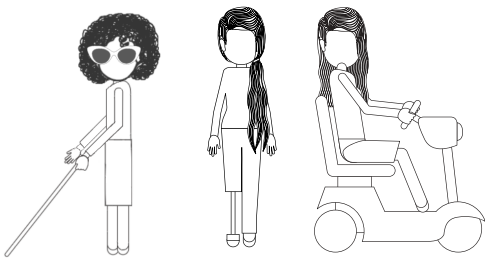
In Canada, disability is **higher** among women than among men

•

Women with disabilities generally earn less than women without disabilities

•

1 in 10 women reported being **refused** a job offer in the past five years due to their disability



(Canadian Survey on Disability, 2012)

If you have any questions or are interested in participating, please contact **Melissa Simas**,
Expanding The Reach Program Coordinator



program@scarboroughwomenscentre.ca



416-439-7111 ext. 3

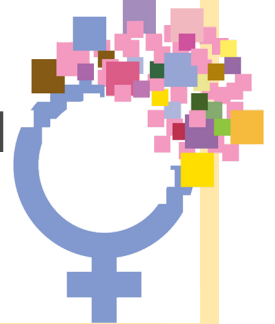


www.facebook.com/expandingthereach



Scarborough Women's Centre
2100 Ellesmere Road, Suite 245
Scarborough, Ontario
M1H 3B7

EXPANDING
THE
REACH



WWW.SCARBOROUGHWOMENSCENTRE.CA



SCARBOROUGH
WOMEN'S CENTRE

Updated: September 2018

EXPANDING THE REACH

Expanding the Reach is an outreach program at the Scarborough Women's Centre for women with disabilities that was started in 2007.

The purpose of the program was to increase the accessibility of the Centre and to provide women with disabilities with access to educational workshops and leadership development opportunities.

CURRENT WORK

We are coordinating a three-year project meant to improve the economic security of women with disabilities living in Scarborough.

PROJECT FUNDERS



FUNDING FOR THIS PROJECT HAS BEEN MADE POSSIBLE BY THE STATUS OF WOMEN CANADA & WOMEN'S XCHANGE GRANT PROGRAM

PROJECT GOALS

Through this project, we will:

Conduct community consultations to increase our awareness of the barriers that impact the economic security of women with disabilities



Document best practices that promote inclusion of women with disabilities in the workforce



Develop tools that promote the economic security and inclusion of women with disabilities in the workforce



Share the project learning locally with our project partner networks, other committed stakeholder, and nationally at the Gender Equality Network



GENDER EQUALITY NETWORK

The Gender Equality Network was created to engage 150 women leaders in collaborative action to advance gender equality across Canada.

Each project was asked to select three women leaders to participate in five meetings across Canada throughout the course of the project.

Our selected women leaders are:
Lynda Kosowan, Fran Odette and Doris Rajan

PROJECT PARTNERS



WE ARE GRATEFUL FOR THE SUPPORT FROM OUR PROJECT PARTNERS.